

HITHIGAS MAGU -06 GOALHI

HITHIGAS MAGU -07 GOALHI

KINBI GAS MAGU

COMMERCIAL BLOCK

HUVANDHUMAA HINGUN

HITHIGAS MAGU



R14-09 Area: 116,731 Sqm 1276.00 sqft		R13-09 Area: 116,731 Sqm 1276.00 sqft
R14-08 Area: 117,285 Sqm 1262.23 sqft		R13-08 Area: 117,285 Sqm 1262.23 sqft
R14-07 Area: 117,285 Sqm 1262.23 sqft		R13-07 Area: 117,285 Sqm 1262.23 sqft
R14-06 Area: 117,285 Sqm 1262.23 sqft		R13-06 Area: 117,285 Sqm 1262.23 sqft
R14-05 Area: 117,285 Sqm 1262.23 sqft	Lot 11124	R13-05 Area: 117,285 Sqm 1262.23 sqft
R14-04 Area: 117,285 Sqm 1262.23 sqft	Lot 11123	R13-04 Area: 117,285 Sqm 1262.23 sqft
R14-03 Area: 117,285 Sqm 1262.23 sqft		R13-03 Area: 117,285 Sqm 1262.23 sqft
R14-02 Area: 117,285 Sqm 1262.23 sqft		R13-02 Area: 117,285 Sqm 1262.23 sqft
R14-01 Area: 116,733 Sqm 1278.03 sqft		R13-01 Area: 116,731 Sqm 1278.01 sqft

R12-06 Area: 133,128 Sqm 1432.87 sqft		R11-06 Area: 133,261 Sqm 1434.91 sqft
R12-05 Area: 133,128 Sqm 1432.80 sqft		R11-05 Area: 133,270 Sqm 1433.91 sqft
R12-04 Area: 133,118 Sqm 1432.87 sqft		R11-04 Area: 133,261 Sqm 1434.91 sqft
R12-03 Area: 133,128 Sqm 1432.82 sqft	Lot 11122	R11-03 Area: 133,308 Sqm 1434.91 sqft
R12-02 Area: 133,128 Sqm 1432.89 sqft		R11-02 Area: 133,304 Sqm 1435.41 sqft
R12-01 Area: 134,799 Sqm 1450.36 sqft		R11-01 Area: 134,799 Sqm 1450.87 sqft

Drawing: Site & Set Back Plan

Scale: 1:100

Drawn by: zihaf

Checked by: Suhail

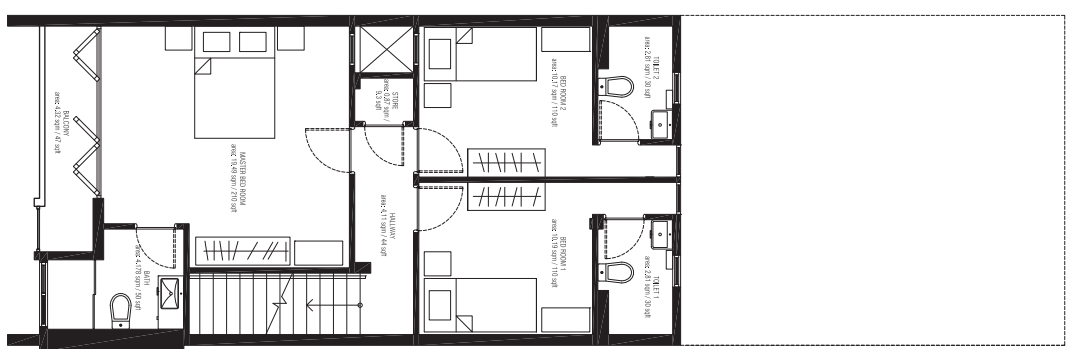
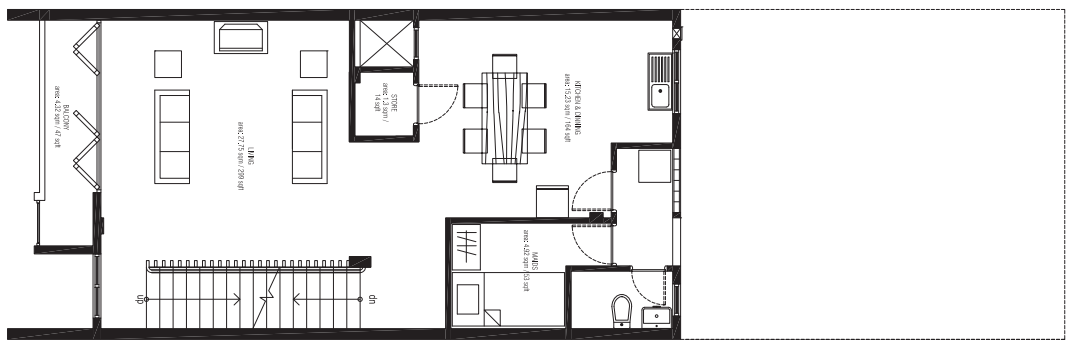
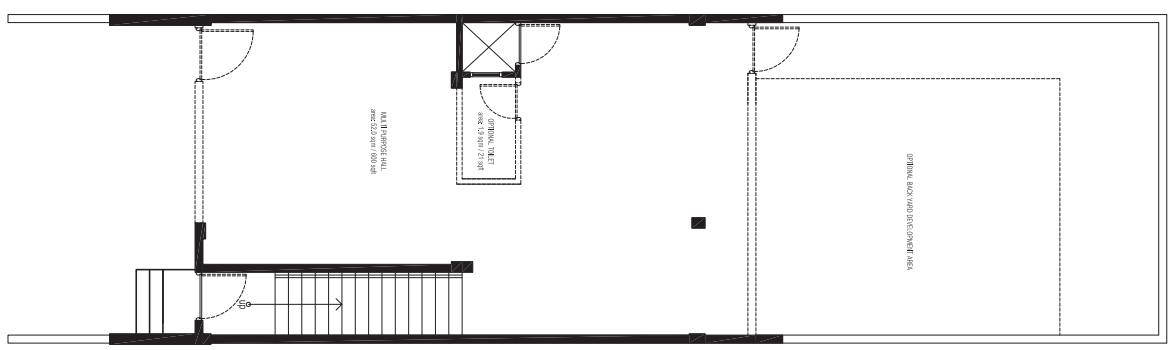
Date: 27th August 2012

Remarks:

Page no:3



HOUSING DEVELOPMENT CORPORATION
 PLANNING & DEVELOPMENT DEPARTMENT
 3RD FLOOR, HDC BUILDING, HILUHUMALE,
 REPUBLIC OF MALDIVES
 TEL: +(960)3355595; FAX: +(960)3358892
 EMAIL: planning@hdc.com.mv



Drawing: Floor Plans

Scale: 1:100

Drawn by: zihar

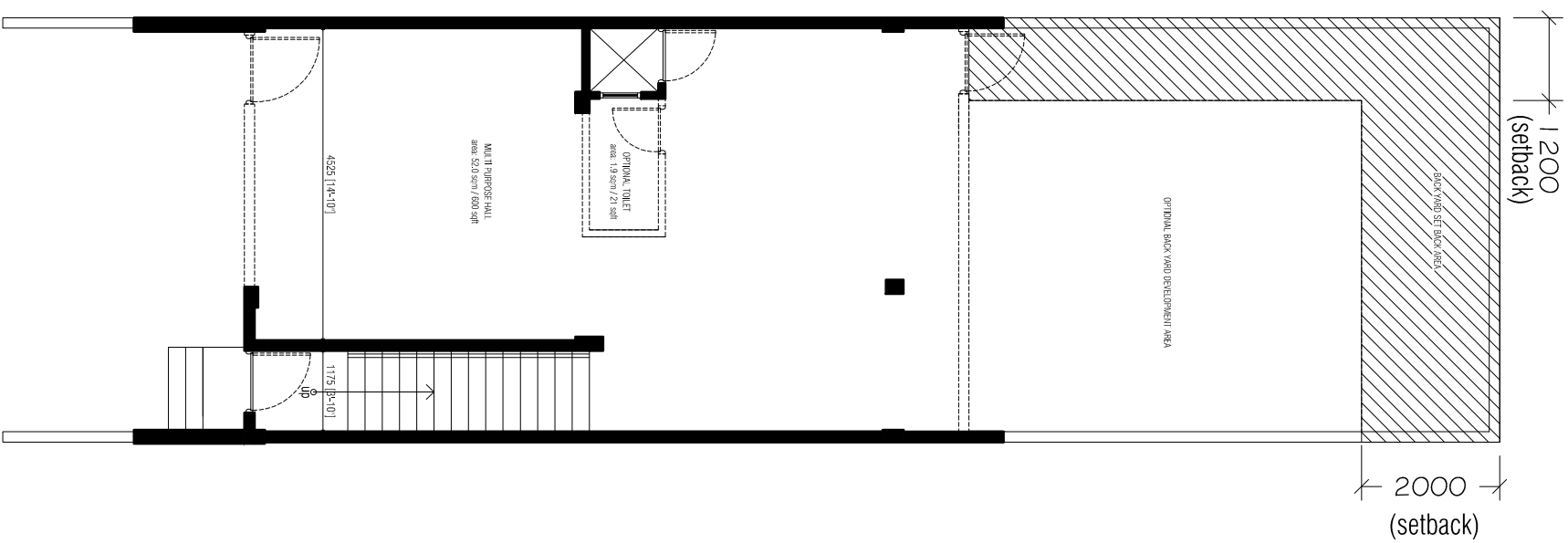
Checked by: Suhail

Date: 27th August 2012

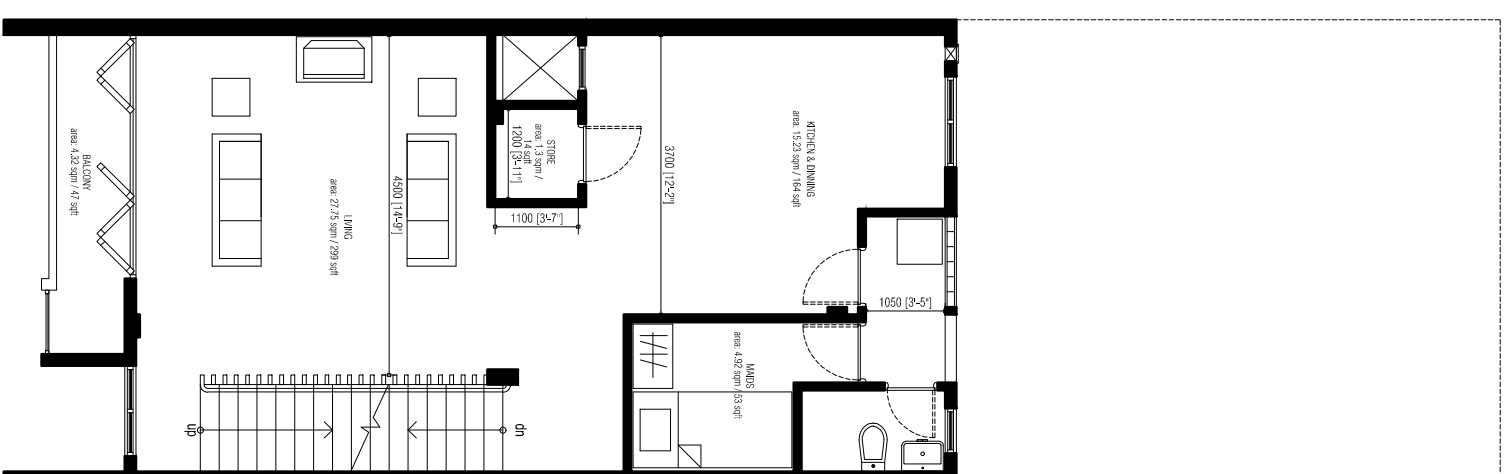
Remarks:

Page no:4

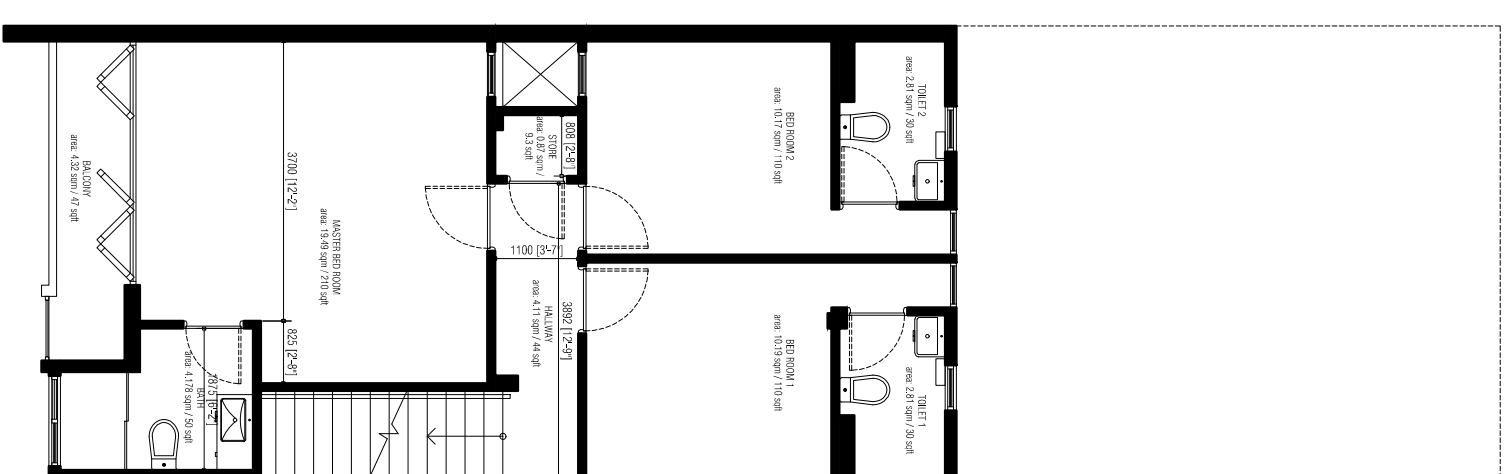
Annex 2(A)



GROUND FLOOR PLAN



FIRST FLOOR PLAN



SECOND FLOOR PLAN



Drawing: Floor Plans

Scale: 1:100

Drawn by: zinaf

Checked by: Suhail

Date: 27th August 2012

Remarks:

Page no:5

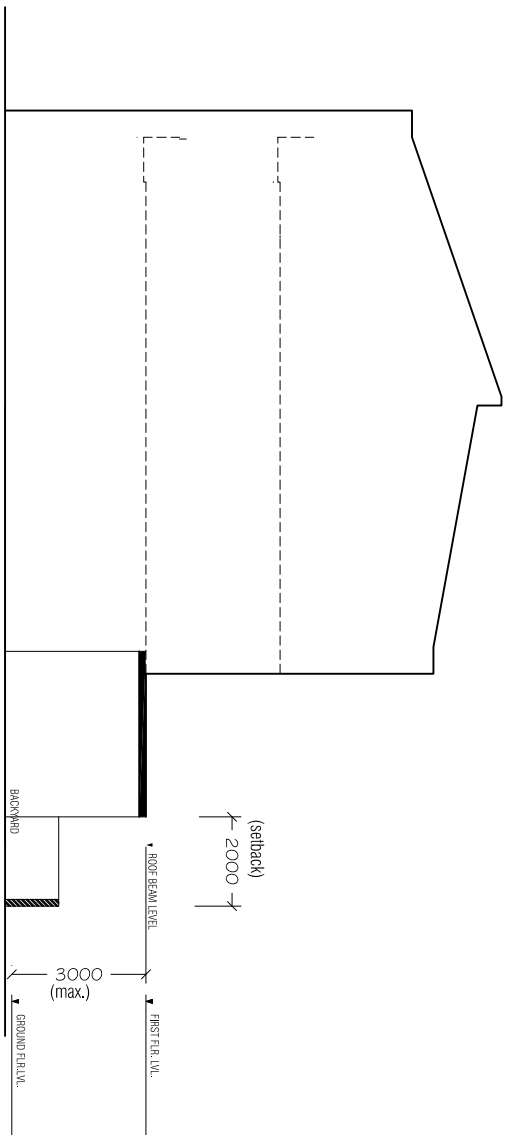
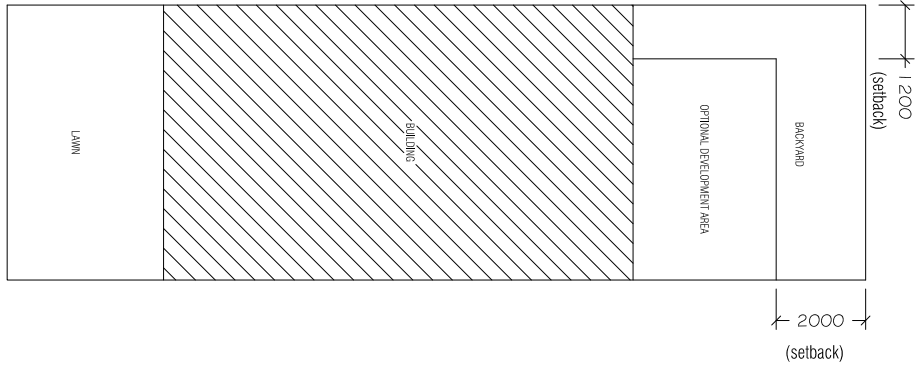


HOUSING DEVELOPMENT CORPORATION
 PLANNING & DEVELOPMENT DEPARTMENT
 3RD FLOOR, HDC BUILDING, HULHUMALE'
 REPUBLIC OF MALDIVES

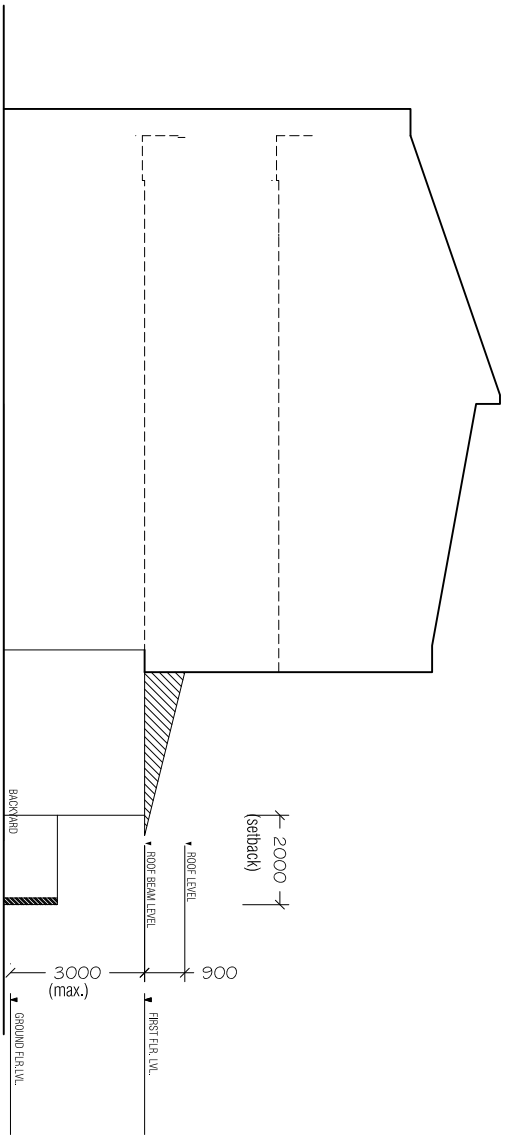
TEL. +(960)3353535, FAX +(960)3358892
 EMAIL : planning@hdc.com.mv

Row house backyard development guideline

Explanation
Backyard can be developed except stipulated setbacks



Option 1 : Roof Slab Finish
Maximum Allowable Height for slab is at 3000 mm from ground finish level



Option 2 : Pitch Roof Finish
Pitch Roofs are allowed to a maximum height of 900mm from roof beam level
Overhang of 150 mm is allowed into the setback

Drawing: Backyard Development Guideline

Scale: 1:75
Drawn by: Zheif
Checked by: Shaif

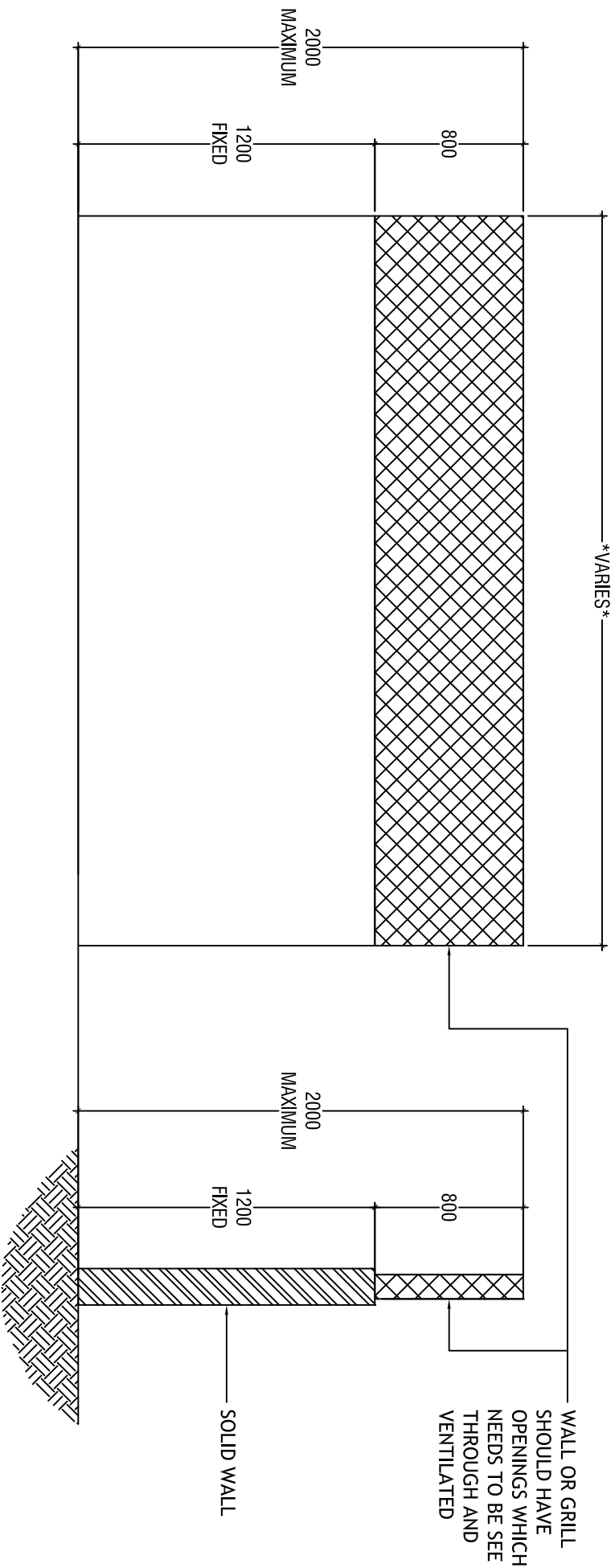
Date: 27 August 2012

Remarks:

Page no: 6



PLANNING AND DEVELOPMENT DEPARTMENT
3RD FLOOR, HCC BUILDING HULLHUMALE
REPUBLIC OF MALDIVES
TEL: +(960)3353535; FAX +(960)3358892
EMAIL: planinfo@hdc.com.mv



ELEVATION
SCALE 1:20

SECTION
SCALE 1:20

ALL DIMENSIONS ARE GIVEN IN MM

DRAWING: FRONT BOUNDARY WALL DIMENSIONS

Scale: 1:25

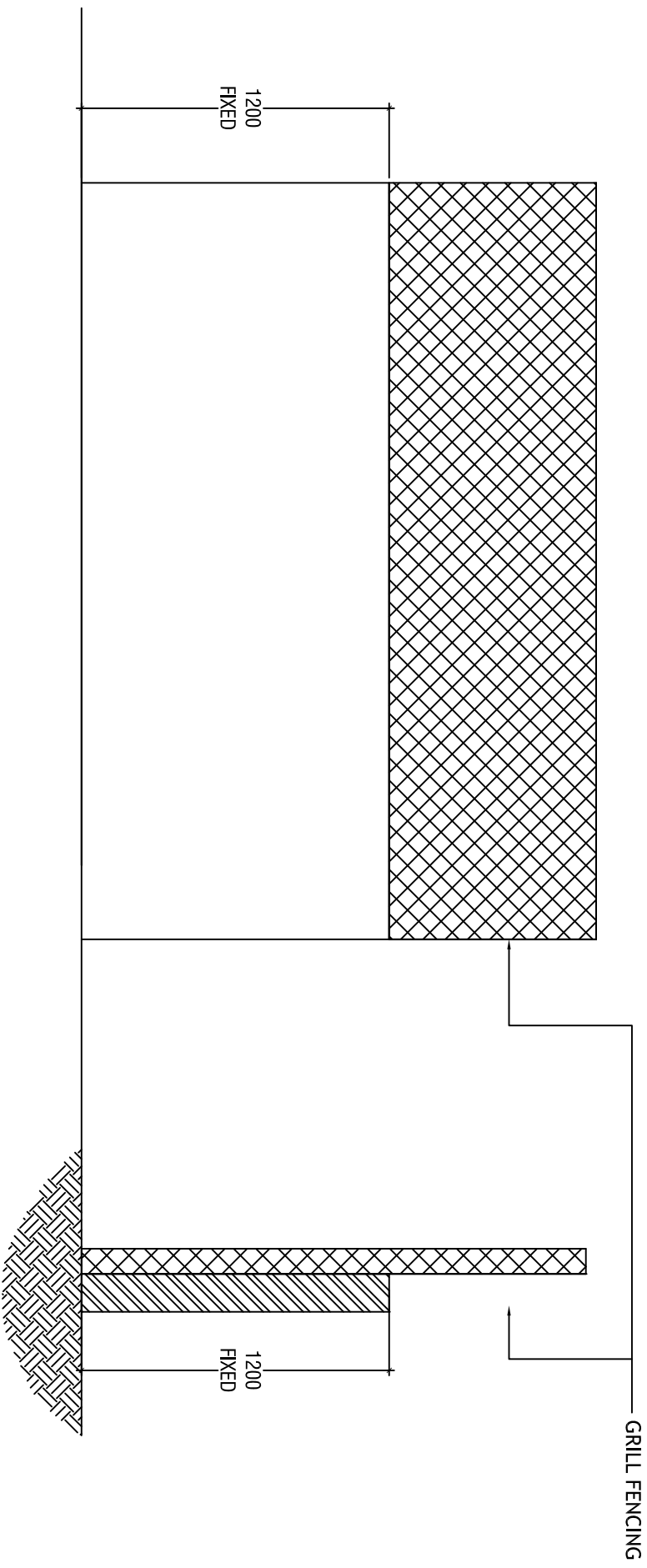
Drawn by: Z. Naph

Checked by: S. Sallih

Date: 17th Feb 2015

Remarks:

Page no: 7



ELEVATION
SCALE 1:20

SECTION
SCALE 1:20

ALL DIMENSIONS ARE GIVEN IN MM

DRAWING: REAR BOUNDARY WALL DIMENSIONS

Scale: 1:25
Drawn by: z.nash

Checked by: Salfi

Date: 17th Feb 2015

Remarks:

Page no: 8

